



# **ReCon DUN SERIES**

## **INTELLIGENT ACCESS SAFETY INSPECTION SYSTEM**



# TRADITIONAL SECURITY METAL DETECTOR & INTELLIGENT SECURITY DETECTION DOOR SYSTEM

False Alarm caused by the daily items such as cell phone, watch, keys and belt buckles, Alarm is given while everyone pass

Slow pass through due to manual detection; prohibited articles detection omissions



Stand-alone working, No pass data records saved, no cloud data platform

No identification for Alarmed Person, no tracing for alarm

**Traditional Security Metal Detector**

Enhanced multiple Functions:  
Security detection, body  
temperature measure, face  
recognition, Cell phone Mac  
collection etc.

Upgrade normal metal  
detection device to intelligent  
security data system



Empowered by AI technologies:  
Face detection and Verification,  
Alarm records related to Pass  
Person; Face Feature Detection

Intelligent metal classification  
detection & quickly pass: No  
alarm for daily items

## **New Generation Intelligent Security Detection Door System**



# PRODUCT INTRODUCTION

**RC-DUN-100** Intelligent Security Gate is a comprehensive technical upgrade of security inspection equipment in the age of AIOT (Artificial Intelligence + Internet ) technology, leading traditional isolated security inspection equipment to the networked intelligent security inspection system.

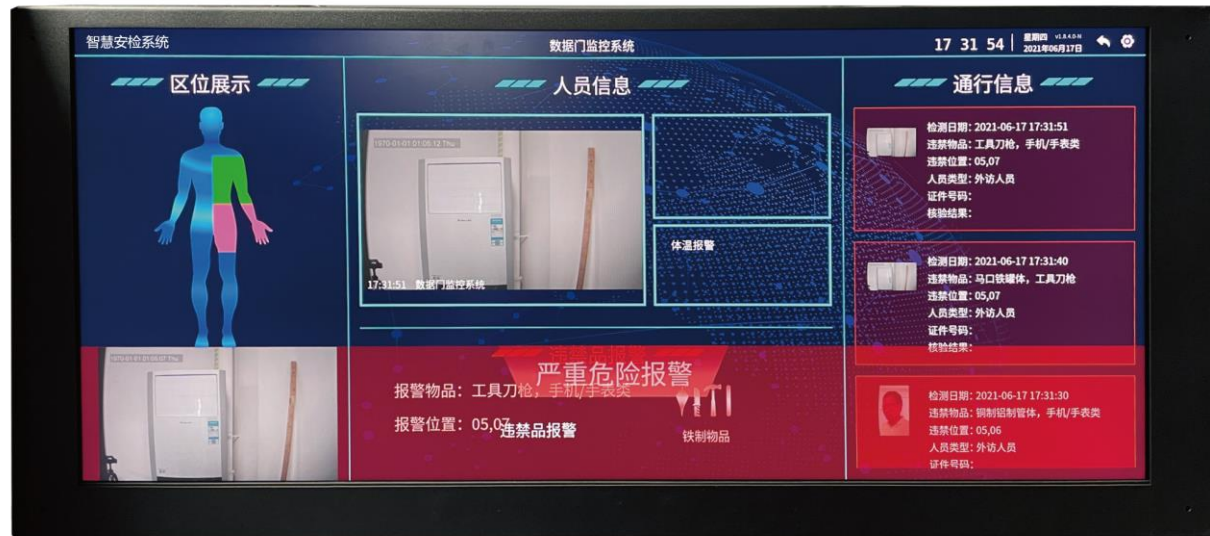
**RC-DUN-100** is an advanced security door product with the highest functional configuration and performance which has been widely applied in all kinds of high-end security place. It is famous for its intelligent classification detection, high sensitivity of contraband detection, strong anti-jamming ability and high degree of intelligence, and has become one of the best choices for security checks in key security units, prisons, courts, subways and hospitals.



Side Picture

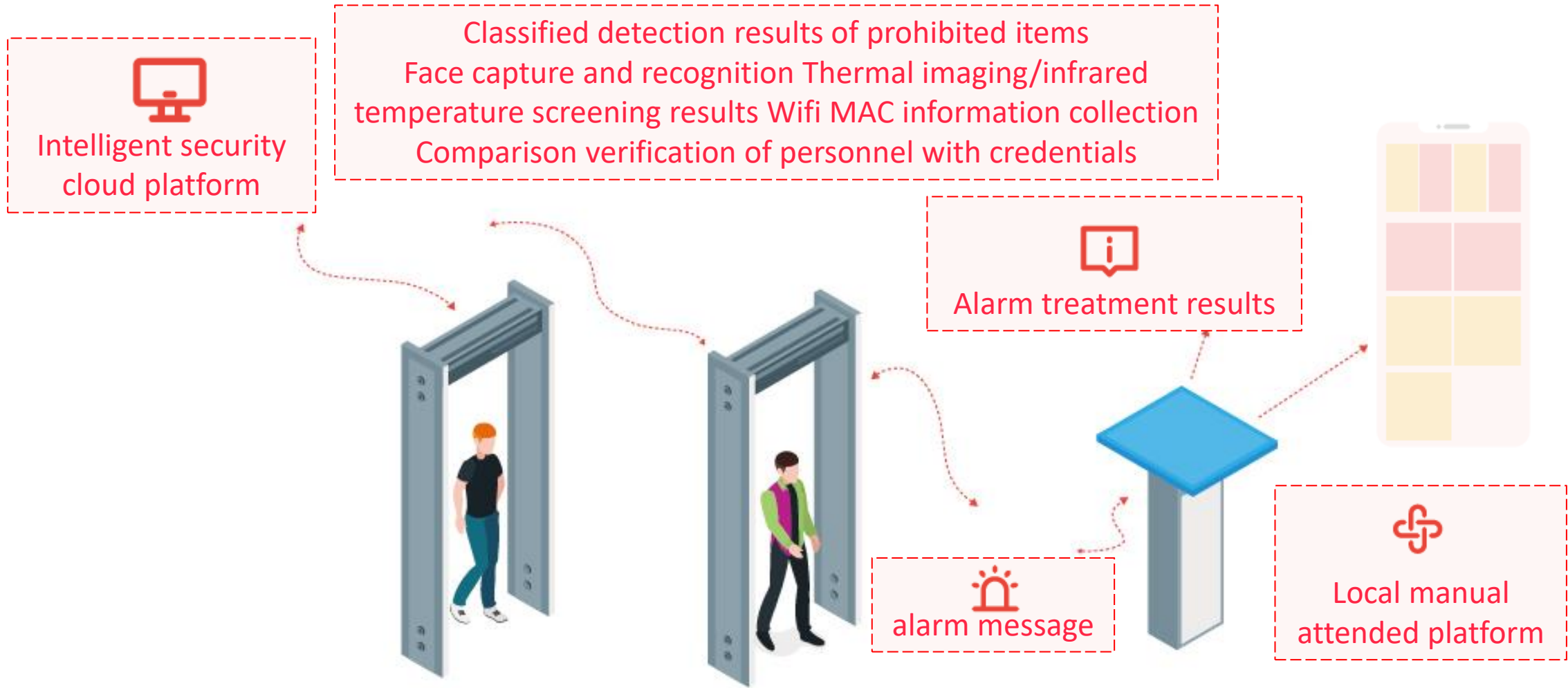


Temperature Measure



Alarm UI

# SYSTEM TOPOLOGY



**Intelligent contraband security gate**

# OUR PRODUCT CHARACTERISTICS

Prohibited metal detection has high sensitivity, strong anti-interference ability and high stability;

To capture and recognize the faces of passing persons, and the detection results are one-to-one bound with the identity of the personnel;

Associated data collection: body temperature data; personnel and certificates verification data; WiFi, Mac data, etc.

Edge computing supports data aggregation and AI algorithm running;



Intelligent metal classification detection patent technology: on the premise of excluding daily items (cell phones, watches, keys, belt buckles, etc.), it can accurately classify the detected prohibited metal articles (referring to machetes, axes, guns, aluminum cans, tin cans, aluminum pipes) and display them by category in the form of pictures and text;

Intelligent connection of things and intelligent security big data platform.



# PRODUCT INTRODUCTION

- Pass the test of national security alarm system product quality supervision and inspection center
- Multilayer overlapping transceiver coil design ensure that the high brightness indicator lamp post can accurately show the horizontal
- position of the metal prohibited items passed, which is convenient for staff to identify quickly and achieve the most ideal detection effect.
- It can detect all kinds of dangerous metal products (such as improvised metal explosive canisters, knives, axes, guns, bullets, lighters, etc.), including magnetic, non-magnetic, alloy.
- It will not alarm when passing with everyday carry-on items such as cell phones, watches, key chains and belt buckles. The image shows the possible carrying area, passing situation, time, location, type of items, etc.
- It has strong antigenic field interference ability and can be used in electromagnetic environment.
- It has alarm indication function, including sound alarm and light alarm
- It has the function of positioning indication which can be fixed, floating switch, positioning display more than 8 areas. At the meantime, it can display the relative position of the alarm through the door post light bar.





- Safety and Standards
  - (1) It is harmless to patients with artificial hearts and other life-sustaining medical devices, and has no effect on pregnant women.
  - (2) No damage to magnetic objects such as disk and multimedia.
  - (3) Comply with all current international safety standards applicable to channel type metal detectors.
  - (4) Comply with CE and E.M.C safety regulations for use.
- It has a built-in edge computing host and a four-way high-definition camera, which can capture the face of passing person without
- feeling and cover the height of 1.2-1.9 meters, to achieve multi-angle omnidirectional face detection and capture.
- Edge computing host supports a database of 200,000 faces, which can be used for black/white list and traffic personnel attribute recognition (gender, age, wearing glasses, wearing masks, expression, wearing hats, etc.).
- Edge host carries out multi-dimensional data aggregation, storage and platform networking upload.
- Edge host supports local high-definition display screen and human-machine friendly interface. It can display alarm, alarm type, alarm location, scene video, face photos of passers and related information through graphic/video. It supports 29 inch 21:9 ultra widescreen, 2K (2560\*1080) HD resolution.
- The system includes an intelligent security big data platform for multi-device networking management, traffic and alarm data management, data statistical analysis and black/white list database management, etc.
- Intelligent security big data platform can support data docking with a third-party platform, and support GAT1400 protocol to upload data to the public security network



- It (optional) supports thermal imaging temperature screening (including boldface) and infrared non-contact temperature collection; the temperature accuracy is  $\pm 0.5^{\circ}\text{C}$  and can up to  $\pm 0.3^{\circ}\text{C}$  with the accuracy of black body.
- It (optional) support WiFi MAC address collection, 2.4g / 5.8g configuration and 2/4/5 multi-channel configuration
- It (optional) supports the verification of personnel with credentials and the scanning of the national health code.
- Physical specifications
  - 1、 Size:  $\geq 2340$  mm (height)  $\times$   $1010$  mm (width)  $\times$   $800$  mm (depth)
  - 2、 Channel width:  $\geq 700$ mm
  - 3、 Net weight: 180Kg
- Installation parameters
  - 1、 Power supply: 115/230VAC,  $\pm 15\%$ , 45-65Hz, 30VA
  - 2、 Operating temperature:  $-15^{\circ}\text{C} \sim +70^{\circ}\text{C}$
  - 3、 Relative humidity: 0  $\sim$  95% (no condensation)



**Shenzhen Metro**



**Nanning Metro**



**Guangzhou Metro**



**Chengdu Metro**



**Beijing Metro**



**Suzhou Metro**



**Harbin Metro**



**Institute of Advanced Technology,  
University of Science & Technology  
of China**



**Shanghai Jing An Detention Center**



**Financial Summit Forum**



**Jiangsu Railway Transportation Promotion Conference**



**Deqing, Zhejiang High School Entrance  
Examination**



**Rm. 1123, 11/F, Metro Centre II, 21 Lam Hing Street, Kowloon Bay, Kowloon, Hong Kong.**



**Phone: +852 2243 3328**



**Fax: +852 2243 3884**



**E-mail: [inquiry@reconbiometrics.com](mailto:inquiry@reconbiometrics.com)**